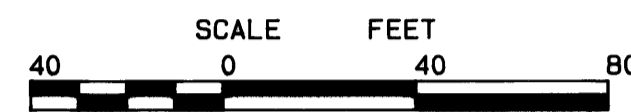
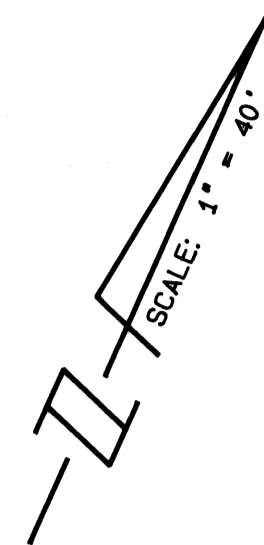


# A PLAT OF CHELSEA SUBDIVISION

BEING A REPLAT OF A PORTION OF LOT 15  
OF THE HANSON GRANT  
AS RECORDED IN PLAT BOOK 5, PAGE 56  
PALM BEACH (NOW MARTIN) COUNTY, FLORIDA

SHEET 2 OF 2

NOVEMBER, 1989



I, MARSHA STILLER, CLERK OF THE CIRCUIT COURT OF MARTIN COUNTY, FLORIDA, HEREBY CERTIFY THAT THIS PLAT WAS FILED FOR RECORD IN PLAT BOOK 12, PAGE 26, MARTIN COUNTY, FLORIDA, PUBLIC RECORDS, THIS \_\_\_\_\_ DAY OF \_\_\_\_\_, 1989.

MARSHA STILLER, CLERK CIRCUIT COURT MARTIN COUNTY, FLORIDA.

BY: \_\_\_\_\_ DEPUTY CLERK

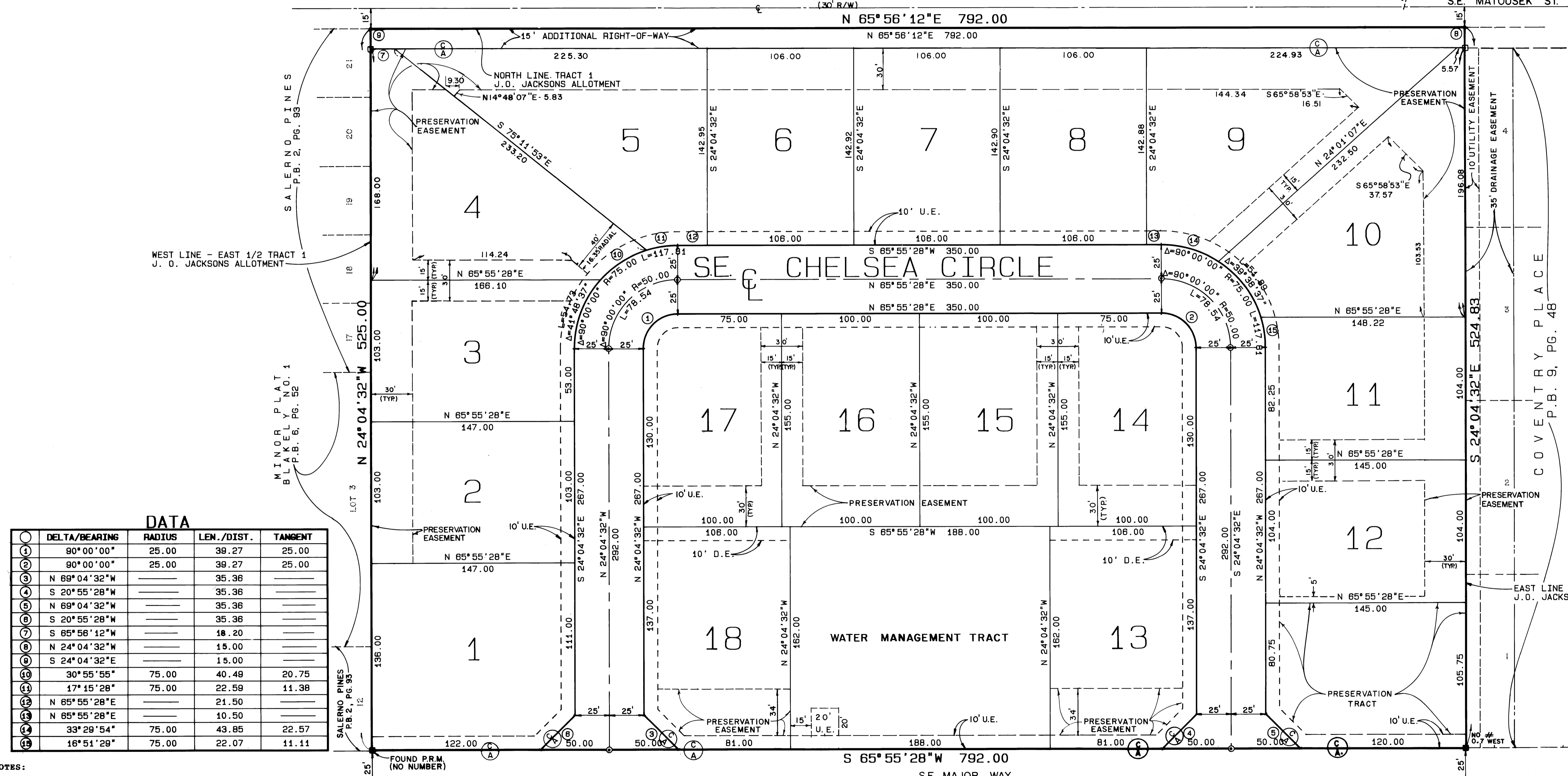
FILE NO. \_\_\_\_\_

(CIRCUIT COURT SEAL)

SUBDIVISION OF LOTS 13 & 14, HANSON GRANT  
P.B. 1, PG. 89, PALM BEACH (NOW MARTIN) COUNTY, FLORIDA.

S.E. ROBERTSON ROAD  
(30' R/W)

S.E. MATOUSEK ST.



**DATA**

①	DELTA/BEARING	RADIUS	LEN./DIST.	TANGENT
①	90°00'00"	25.00	39.27	25.00
②	90°00'00"	25.00	39.27	25.00
③	N 69°04'32"W		35.36	
④	S 20°55'28"W		35.36	
⑤	N 69°04'32"W		35.36	
⑥	S 20°55'28"W		35.36	
⑦	S 65°56'12"W		18.20	
⑧	N 24°04'32"W		15.00	
⑨	S 24°04'32"E		15.00	
⑩	30°55'55"	75.00	40.49	20.75
⑪	17°15'28"	75.00	22.59	11.38
⑫	N 65°55'28"E		21.50	
⑬	N 65°55'28"E		10.50	
⑭	33°29'54"	75.00	43.85	22.57
⑮	16°51'29"	75.00	22.07	11.11

**NOTES:**

EACH NUMBER TRACT DEPICTED HEREON IS A LOT.  
THERE SHALL BE NO LOT SPLITS EXCEPT TO CREATE LARGER LOTS.  
BEARING BASE:  
THE NORTH LINE OF TRACT 1 OF J.O. JACKSON ALLOTMENT IS TAKEN TO BEAR N 65°56'12"E AND ALL OTHER BEARINGS SHOWN HEREON ARE RELATIVE THERETO.  
THERE SHALL BE NO BUILDINGS OR STRUCTURES PLACED ON UTILITY EASEMENTS.  
THERE SHALL BE NO BUILDINGS OR THE PLANTING OF TREES OR SHRUBS ON DRAINAGE EASEMENTS.

□ - DENOTES P.R.M. (PERMANENT REFERENCE MONUMENT) SET  
● - DENOTES P.R.M. (PERMANENT REFERENCE MONUMENT) FOUND  
⊙ - P.C.P. (PERMANENT CONTROL POINT)  
U.E. - UTILITY EASEMENT  
D.E. - DRAINAGE EASEMENT

TRACT 8, J.O. JACKSON'S ALLOTMENT  
P.B. 5, PG. 56, PALM BEACH (NOW MARTIN) COUNTY, FLORIDA.

Ⓢ - Denotes "Control of Access" No vehicular traffic without prior approval of the Board of County Commissioners of Martin County, Florida.

LINDAHL, BROWNING FERRARI & HELLSTROM, INC.  
CONSULTING ENGINEERS, PLANNERS & SURVEYORS

18 CENTRAL PARKWAY  
SUITE 108  
STUART, FLORIDA 34994

1986 SOUTH 23TH STREET  
SUITE 108  
FORT PIERCE, FLORIDA 34947

2 2